

FUNCTIONS	
Print, Scan, Copy, Wireless Network, Mobile Print	
GENERAL	
Memory	64MB
Display	1-Line
Interface	Hi-Speed USB 2.0
Wireless Network	Yes
COLOUR PRINT FUNCTION	
Print Speed (Laser Comparable)^	Up to 11ipm (mono) and 6ipm (colour)
Print Speed (Fast Mode)	Up to 27ppm (mono) and 10ppm (colour)
Print Resolution	Up to 1,200 x 6,000 dpi
Borderless Printing	Yes: A4, LTR, A6, Photo (102mm x 152mm / 4" x 6"), Indexcard (127mm x 203mm / 5" x 8"), Photo-2L (127mm x 178mm / 5" x 7")
Ink Save Mode	Yes
Mobile Print	Brother iPrint&Scan, Google Cloud Print™
COLOUR COPY FUNCTION	
Copy Resolution	Print: Max. 1200 x 2400 dpi Scan: Max. 1200 x 1200 dpi
N in 1 Copy	Yes (Including ID Card Copy)
Base Colour Removal	Yes
COLOUR SCAN FUNCTION	
Scan Resolution	Optical: Up to 1,200 x 2,400 dpi Interpolated: Up to 19,200 x 19,200 dpi (For XP / Vista / Windows 7 / Windows 8)
"Scan To" Feature	Image, Email, File
ADDITIONAL FEATURES	
Poster Print / Copy	Yes
Enlargement / Reduction Ratio	25% - 400% in 1% increments

PAPER HANDLING	
Paper Input (Standard Tray)	Up to 100 sheets
Paper Output	Up to 50 sheets
Paper Handling Sizes (Standard Tray)	A4, LTR, LGL, EXE, A5, A6, Photo (102 x 152mm / 4"x 6"), Indexcard (127 x 203mm / 5" x 8"), Photo-2L (127 x 178mm / 5" x 7"), C5 Envelope, Com-10, DL Envelope, Monarch (LGL is only for Philippines, Thailand, Malaysia, Vietnam, Gulf, Indonesia, India)
Media Type	Plain, Inkjet, Glossy
SUPPORTED OS & SOFTWARE	
Supported Operating Systems	Windows: XP / XP x64 / Vista / 7 / 8 / 8.1 Server 2003 / Server 2003 R2 / Server 2008 / Server 2008 R2 / Server 2012 / Server 2012 R2 Mac: OS X v10.7.5 / v10.8.x / v10.9.x
Network Management Tools	BRAdmin Professional 3*, Driver DeploymentWizard*, BRAdmin Light**
SUPPLIES	
Ink Bottles	Ultra High Yield (Black) BT6000 BK: Approximate Yield 6000 A4 pages**. Ultra High Yield (Colour) BT5000 C/M/Y: Approximate Yield 5000 A4 pages**
Brother Paper	BP71GA4: A4 glossy photo paper BP71GP20: 4 x 6" glossy photo paper BP60MA: A4 matte paper BP60PA: A4 plain paper
DIMENSIONS & WEIGHT	
Without Carton	435mm (W) x 374mm (D) x 161mm (H), 7.1kg

^ Based on ISO/IEC 24734. For more information, please refer to www.brother.com/rd/printspeed

* Not supported on Mac and Linux. Available for download at <http://support.brother.com>

** Not supported on Linux. Available for download at <http://support.brother.com>

** Approximate yields are extrapolated based on Brother original methodology using Test Patterns ISO/IEC 24712. Approximate yields are not based on ISO/IEC 24711.

Smarter Design.
Bigger Savings.

BLACK
6000
page-yield[#]



Wireless

Refill Tank System



Scan here for more information and promotions from Brother



Brother strongly recommends the use of genuine Brother consumable products only. Benefits include better quality print, greater yields per consumable, protection of your machine from damages and achievement of optimum performance. As a precaution, please note that your machine warranty may not cover any damages arising from the use of non-genuine consumables.

Contact:

Care Line: 03-7884 9999 / Email: atyourside@brother.com.my

Brother International (Malaysia) Sdn. Bhd. (529739-H)
T1-5, 5th Floor, Tower 1, Jaya 33, No. 3, Jalan Semangat, Seksyen 13, 46200 Petaling Jaya, Selangor Darul Ehsan, Malaysia. Tel: (603) 7884 9999 Fax: (603) 7884 9911
Customer Service operation hours: Monday - Friday: 8.30am - 5.30pm, Saturday: 8.30am - 1.00pm (Except for public holidays)

BROTHER INTERNATIONAL CORP., JAPAN
BROTHER INTERNATIONAL (M) SDN BHD (529739-H)

www.brother.com.my

Designed to give you big savings, the new Brother Inkjet Multi-Function Centre **DCP-T500W** features a new Refill Tank System and offers ink bottles with ultra-high 6000 page-yield[#]. You can now maximise your savings and benefit from a smarter design that makes ink refilling effortless!

Exceedingly Affordable

Save more with Brother's low cost ink that provides up to 6,000 page-yield[#]. Now, high print volume users can reduce overall operating costs with every printout.

Moreover, with Brother's original refill ink, you minimise the risk of print head damage. This means less repair and replacement costs on your machine.

Make the most out of your budget and choose Brother's original refill ink. Maximise savings day after day!



*Refers to black ink. Colour ink: 5000 page-yield. Quoted approx. yields are extrapolated based on Brother original methodology using Test Patterns ISO/IEC 24712. Quoted approx. yields are not based on ISO/IEC 24711.

Refilling is so easy with **Refill Tank System** 3 Easy Steps!



Open cover.

Accessing ink tank is so easy with the cover right in front.



Refill ink tank.

Remove tank cap. Tilt ink bottle at 45° angle and gently squeeze it to refill ink tank.



You're done!

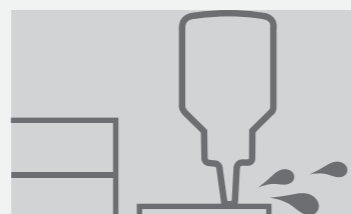
Replace cap and close cover. It's that easy!

User-Friendly Refill Experience

Most conventional printers require users to tilt the ink bottles vertically when refilling, which increases risk of spillage. Brother's smart design allows for refilling at an optimised 45° refilling angle. This minimises ink leakage and takes the hassle out of refilling.

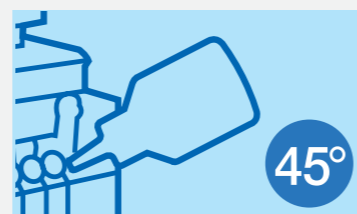


Other Printers



Potential spillage

Brother's Smart Design



Minimise spillage

Saves Space and Convenient

Other printers with external ink tanks usually require additional room for opening and closing of the ink tank compartment, as well as for reviewing ink levels.

Brother's Refill Tank System features a smart design with an embedded, front-access ink tank and a see-through cover. This saves space effectively and makes it easy to check how much ink is left.

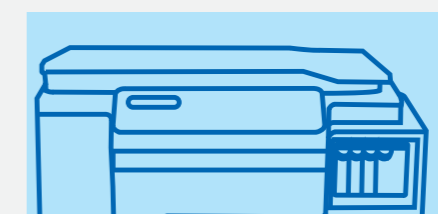


Other Printers



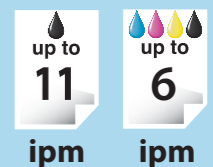
Wastes space

Brother's Smart Design



Saves space

Work smarter with essential business features



Print Speed

Up to 11ipm mono / 6ipm colour*
Up to 27ppm mono / 10ppm colour
(fast mode)

*ISO/IEC 24734 <http://www.brother.com/rd/printspeed>



Wireless

Save resources and share DCP-T500W with multiple users conveniently through wireless LAN.



Mobile Printing

Simplify the way you print with mobile print capability.