

Vimble 2 gimbal & pole

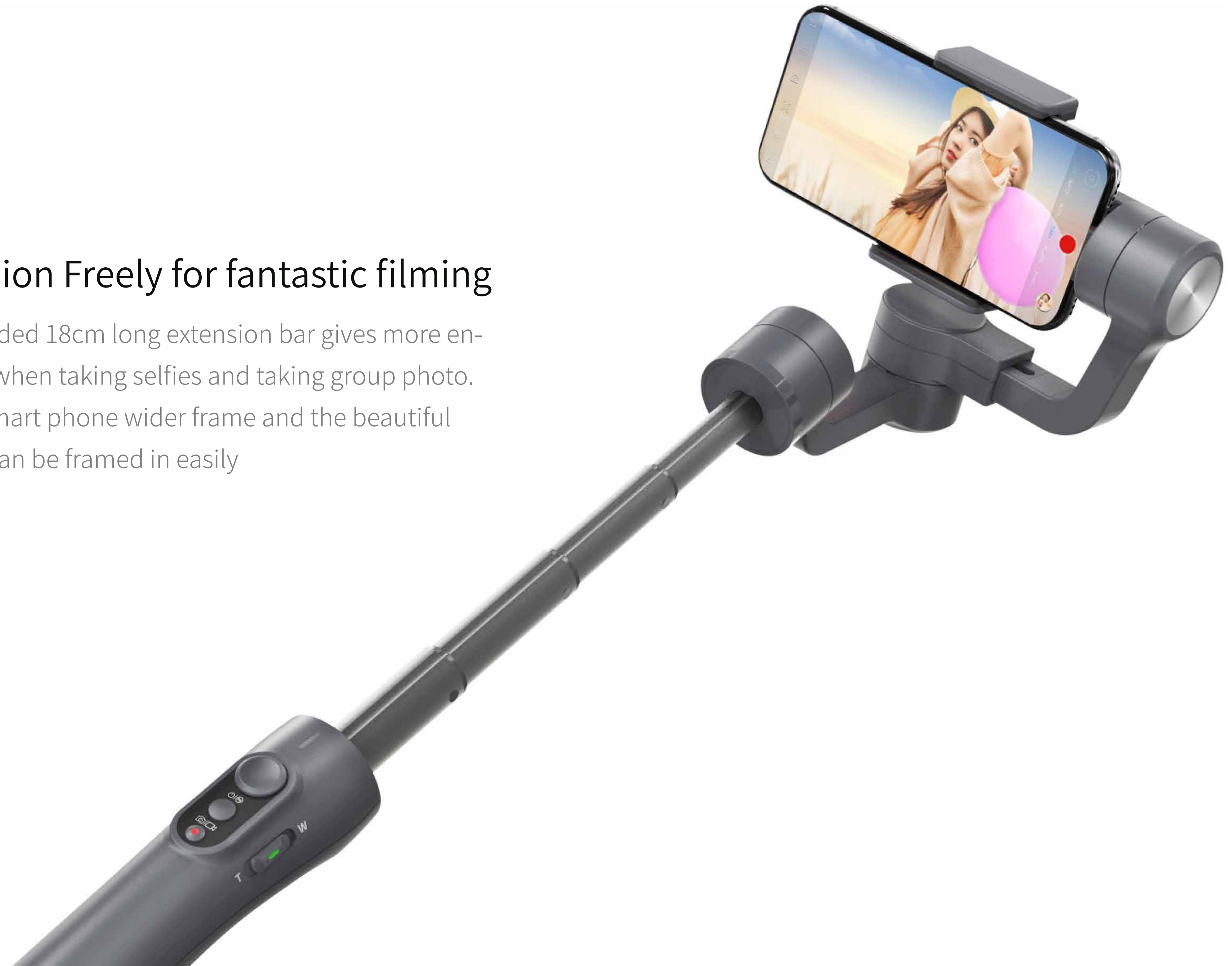
**VIMBLE 2**

It enables you to love shooting



## Extension Freely for fantastic filming

Newly added 18cm long extension bar gives more enjoyment when taking selfies and taking group photo. It gives smart phone wider frame and the beautiful scenery can be framed in easily





## Selfie mode shifting quickly

Connect the gimbal with Vicool App, and continuously click the function button for three times, the smart phone camera lens will shift from back and front quickly.





## Two solutions to control the smart phone from Vimble 2: Bluetooth shutter button

The operation of bluetooth shutter button is fully upgraded. Through blue tooth connection between smart phone and Vimble 2, Vimble 2 can control the smart phone camera by the shutter button. And Vicool App allows more fantastic operations.

## Various time-lapse photography



Time-lapse photography



time-lapse photography in auto-rotation mode



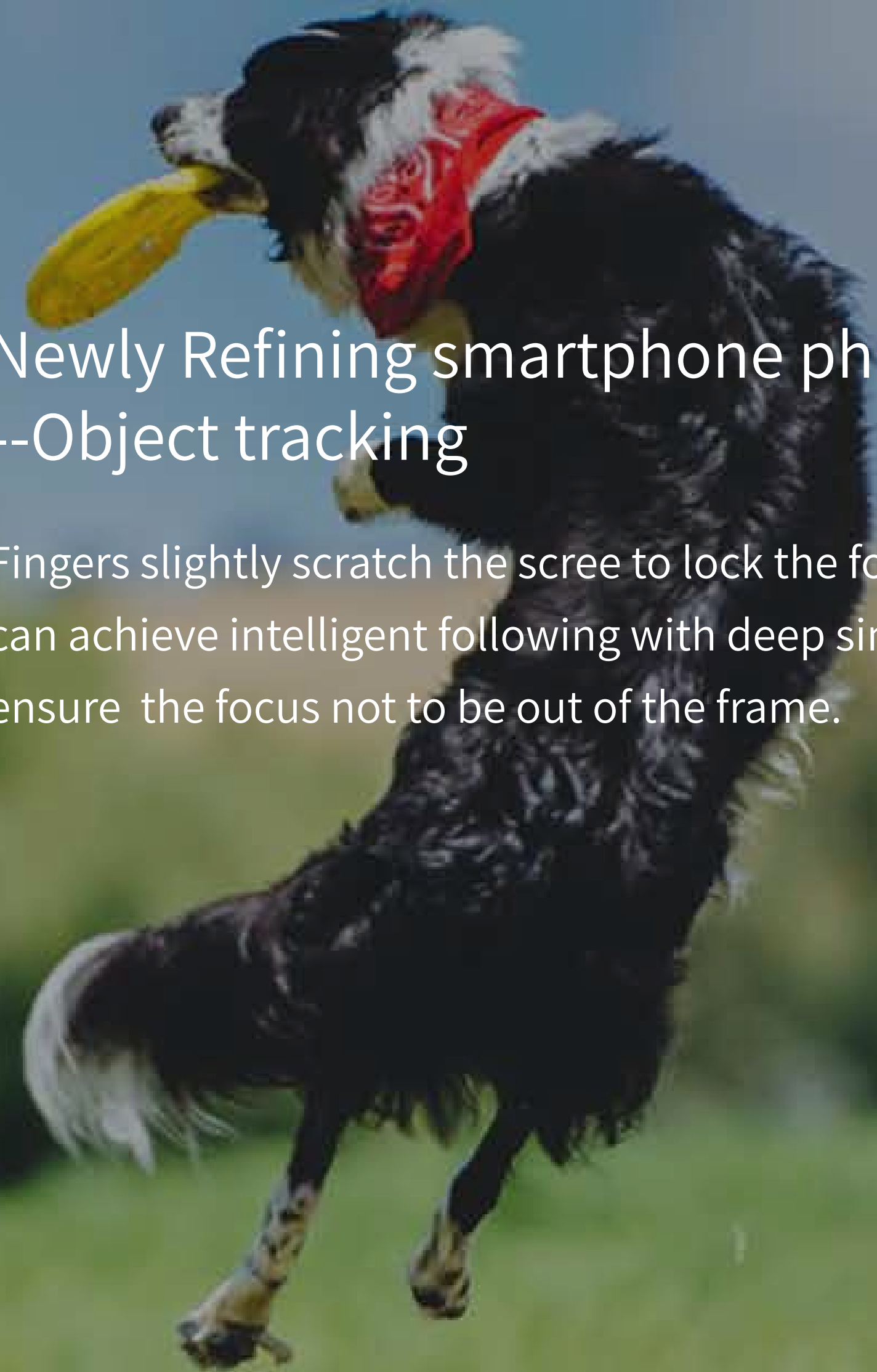
Trail time-lapse photography





## Newly Refining smartphone photography --Object tracking

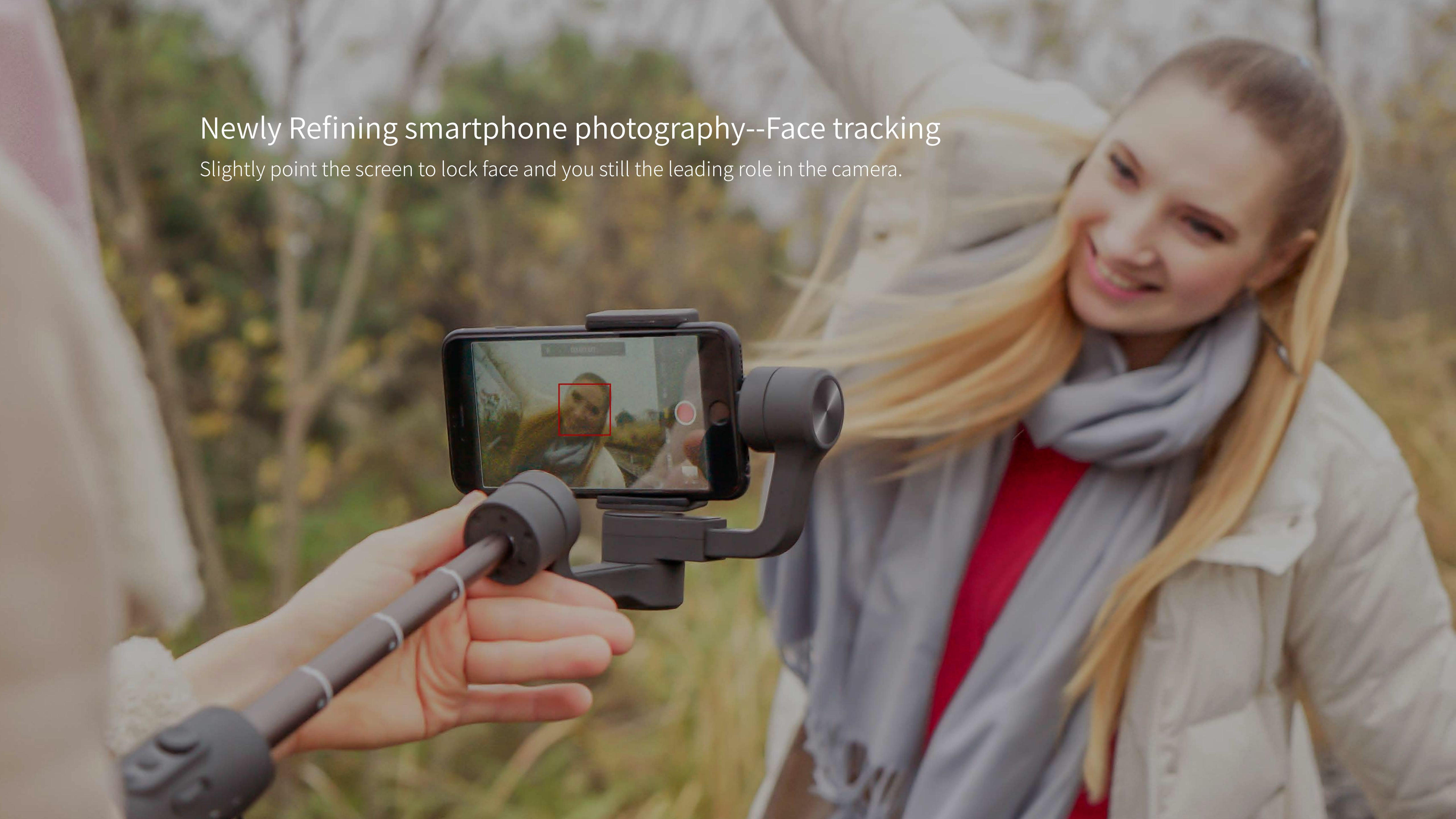
Fingers slightly scratch the scree to lock the focus,And it can achieve intelligent following with deep simulation to ensure the focus not to be out of the frame.





## Newly Refining smartphone photography--Face tracking

Slightly point the screen to lock face and you still the leading role in the camera.





Innovative smart phone mount.  
Quickly change shooting direction from Horizontal to vertical.  
Easily adapt itself in different shooting scenes.  
Have better using experience when taking selfies and being in live show.





Built-in Zoom slider in handle, easier in operation but more professional in production



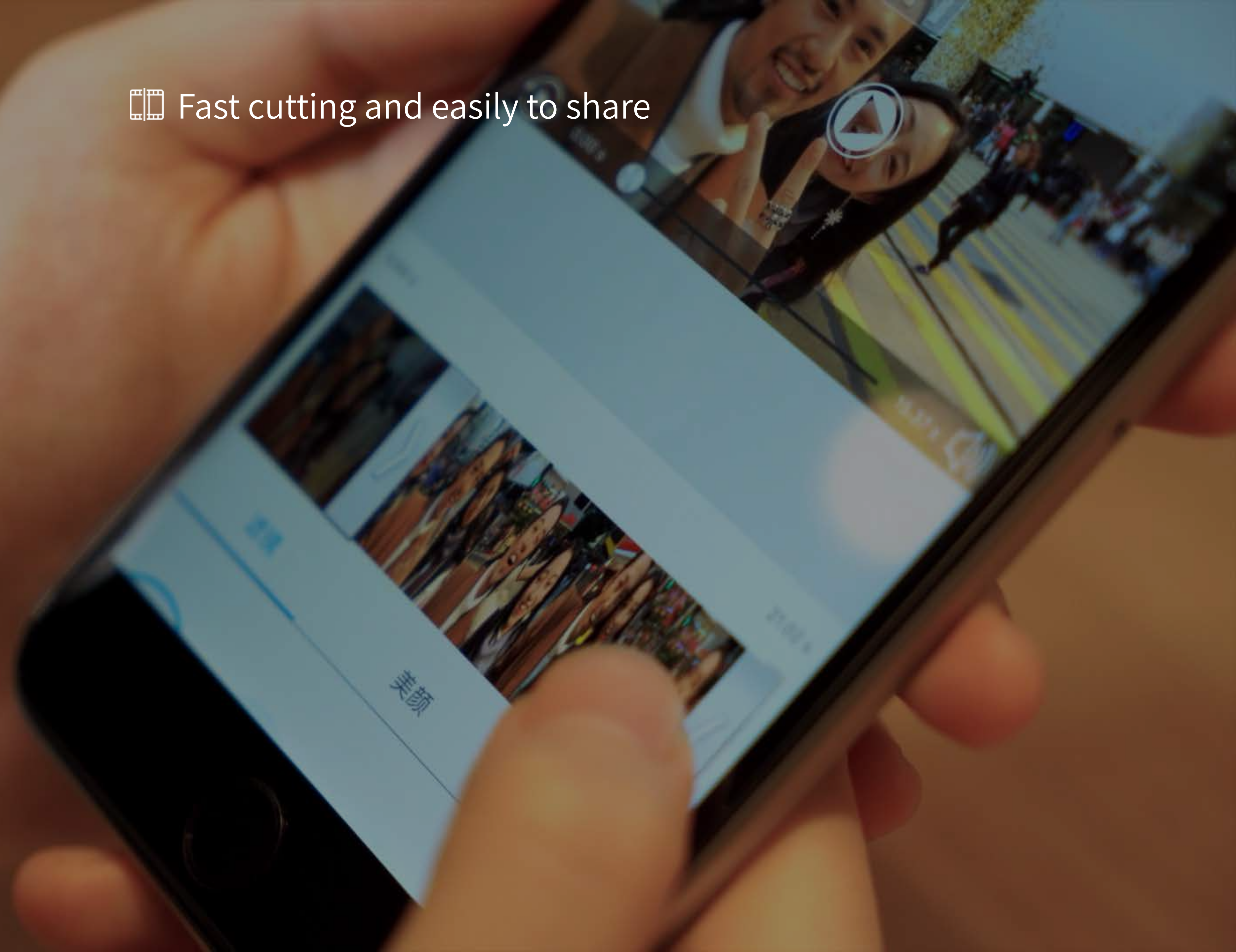


## ☐☐ Panorama Photography





📱 Fast cutting and easily to share







New trigger button with quick setting function, sets free your hand while shooting. Long pressing for quick locked, release to enter previous working mode.



Panning mode



Panning and Tilting mode



lock mode

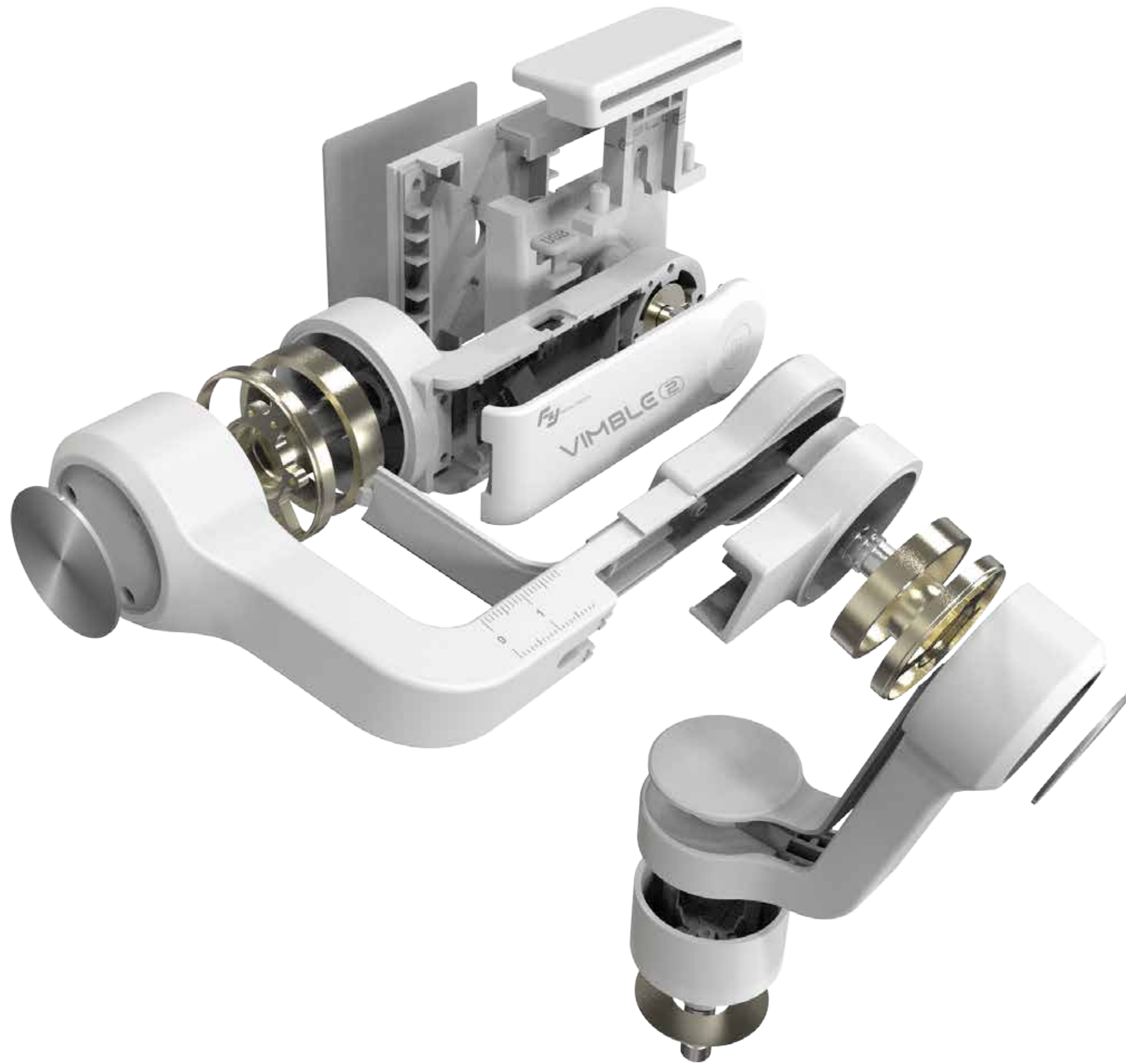


## Long-lasting working time

5-hour runtime for Vimbel 2, if including the dormancy it can work 10 Hours. Built-in Micro USB port, allow you to charge gimbal by power bank, shoot as long as you want.

Remarks: power bank output is not less than 500mAH.





## self-adaptation control

self-adaptation control algorithm reduces the requirement for smartphone balancing while mounting. Sliding arm for quick adjustment and balancing. Gradually falling down when power off, better protect your smartphone.



## Fashion colors

Innovative outline, light unibody, multi-color and fashion appearance





# Flexible, convenient and multi-function

The body engineering streamline shape, the back TPU package, feel comfortable. The body adopts the heat resistant low temperature and high strength material, strong and light.

Net Weight	Extention Pole	Size
428g	18cm	110.5x118x323mm





